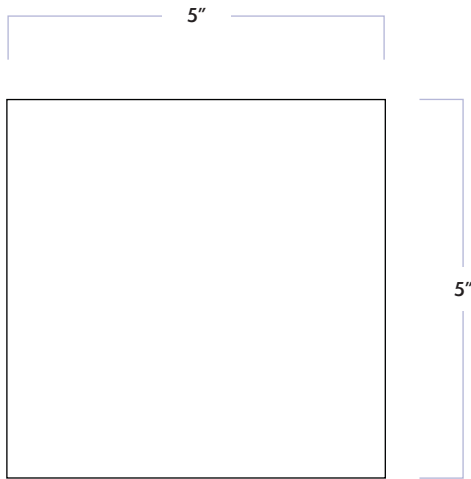


Duquesa™ Ceramic

5" x 5" Field

DATE REVISED: FEBRUARY 2025

WALKER ZANGER®

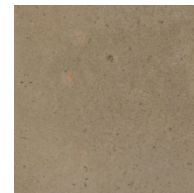


MATERIAL	Ceramic
FINISH	Matte
THICKNESS	5/8"
SIZE	4-5/8" x 4-5/8"
COVERAGE SQFT/PIECE	0.1493
MOUNTING	Loose

AVAILABLE COLORS



Crema



Argento



Mezzanotte

RECOMMENDED USAGES



Commercial Interior Wall



Residential Interior Wall



Shower Wall*

MATERIAL DATA



V4 Color Variation

MAINTENANCE



Sealing is not required



Clean with non-abrasive pH balanced cleaner and a soft sponge

ADDITIONAL NOTES

Duquesa ceramic tiles are not recommended for residential or commercial flooring, especially heated flooring. Use on kitchen countertops or working surfaces is not recommended since the acidity of liquid spills and excessive heat from cooking utensils may damage the glaze. If used near a fireplace or near a stove (such as kitchen backsplash), care should be taken that our tiles are not exposed to high levels of direct heat as all cooktops vary in heat disbursement. These tiles should not be placed, used near or installed behind professional/commercial grade cooktops. Because we cannot control variables such as the proximity of heat to tile, use at your own discretion. Cracking, darkening, or peeling may occur if installed too close to extreme high heats. Use in showers is limited to walls. For installation on shower walls, tile must be 6" to 8" above the shower floor. Please refer to TCNA guidelines and consult with your installer for proper waterproofing and sealing requirements. For further questions/information about additional usages, please consult with your installer. This product is pre-sealed. For re-sealing, use only water-based sealer. Chemical-based sealers may permanently damage the finish. Never use abrasive cleaning pads or cleaning solutions that contain bleach or ammonia as they may permanently damage the antique finish. Cleaning with a non-abrasive pH balanced cleaner and a soft sponge are recommended.

Duquesa™ Ceramic
5" x 5" Field

DATE REVISED: FEBRUARY 2025

