

WALKER ZANGER™

6TH AVENUE
COLLECTION

HANDCRAFTED WHITE-BODY CERAMIC TILES





6TH AVENUE COLLECTION

An Avenue of Possibilities

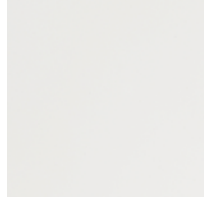
Versatile, durable, and luxurious, 6th Avenue is Walker Zanger's quintessential core collection. Exclusively handcrafted in our very own ceramic studio facility, 6th Avenue comprises extremely durable white-body ceramic tile and mosaics in a variety of classic styles – and a dazzling array of over 100 available colors.

Design without limits.

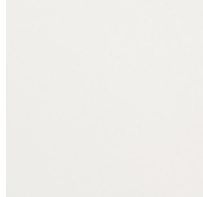
Integrate 6th Avenue elements with our other collections and take your design to fresh new places, bound only by the horizons of your imagination.

Tier 1 Colors

In deciding which colors to keep in stock, Walker Zanger turned to its customers. The following are our top 10 most popular colors, and are available on demand with no minimum order quantities or additional lead times.



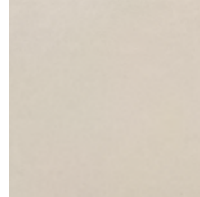
COLOR: **WHITE**
FINISH: **GLOSS**



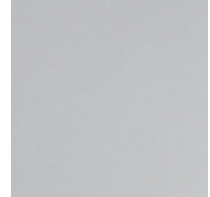
COLOR: **WHITE**
FINISH: **MATTE**



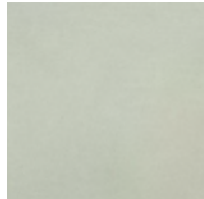
COLOR: **CANVAS**
FINISH: **GLOSS**



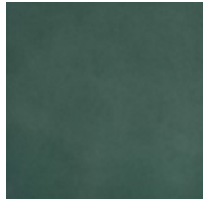
COLOR: **FOG**
FINISH: **GLOSS**



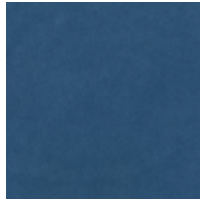
COLOR: **PALE SKY**
FINISH: **GLOSS**



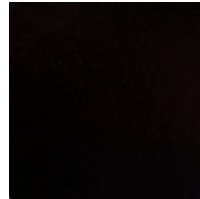
COLOR: **FRENCH CLAY**
FINISH: **GLOSS**



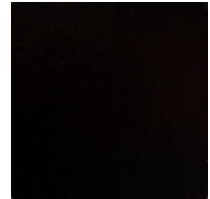
COLOR: **JADE**
FINISH: **GLOSS**



COLOR: **MARLIN BLUE**
FINISH: **GLOSS**

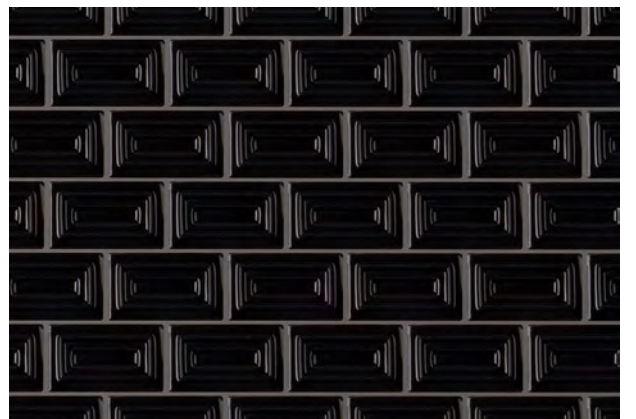
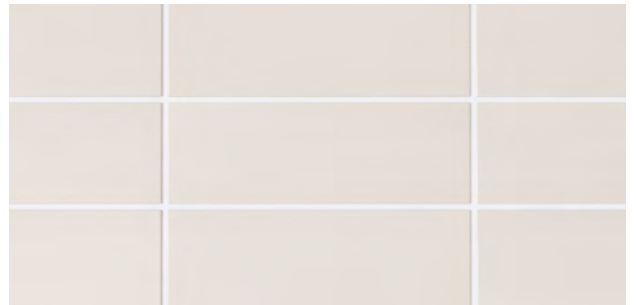
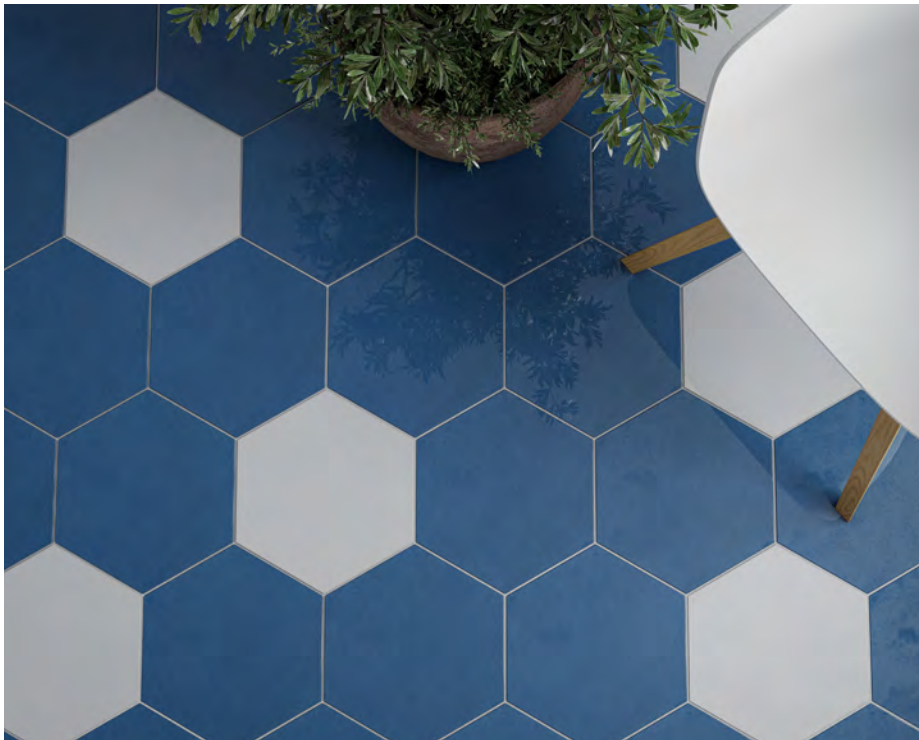


COLOR: **INK**
FINISH: **GLOSS**



COLOR: **INK**
FINISH: **MATTE**

PRODUCTS SHOWN
VARIOUS PRODUCTS IN WHITE MATTE & JADE GLOSS (RIGHT)
6" HEX IN MARLIN BLUE GLOSS & WHITE GLOSS (BOTTOM LEFT)
2"X6" FIELD TILE IN CANVAS GLOSS (BOTTOM RIGHT)
MUSEUM MOSAIC IN INK GLOSS (BOTTOM RIGHT)





Tier 2 Colors

In order to ensure the quality of our handcrafted tiles, the following colors are available through special order at a slightly higher price point than Tier 1 colors. Tier 2 colors also require a minimum order quantity, and a relatively brief additional lead time.

LEAD TIME: 6-8 WEEKS

Plus transit, from date of deposit and client purchase to delivery to the Los Angeles distribution center. Please allow additional lead time for product to reach final destination.

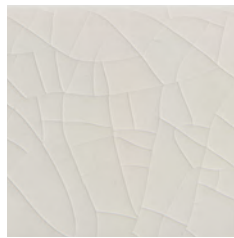
MINIMUM ORDER QUANTITIES:

200 sq ft per color for field tiles / 50 pieces per color for trims & moldings

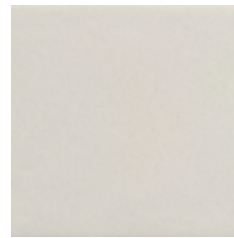
Different pieces and patterns can be mixed & matched to meet minimum order quantity as long as all are the same color. If the minimum order quantity is not met, then a \$1,195 set-up fee will be charged.



COLOR: **BLANC**
FINISH: **GLOSS**



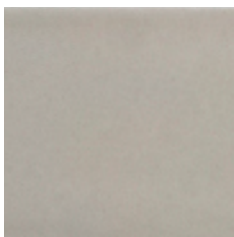
COLOR: **FROST**
FINISH: **CRACKLE**



COLOR: **SNOW**
FINISH: **MATTE**



COLOR: **WEDGETAIL**
FINISH: **GLOSS**



COLOR: **OXFORD**
FINISH: **GLOSS**



COLOR: **RIVER MINT**
FINISH: **GLOSS**



COLOR: **CELESTE**
FINISH: **GLOSS**



COLOR: **MOONSTONE**
FINISH: **GLOSS**



COLOR: **SALTBUSH**
FINISH: **GLOSS**



COLOR: **CAPE COD**
FINISH: **GLOSS**



COLOR: **LILLY PILLY**
FINISH: **GLOSS**



COLOR: **OPAL**
FINISH: **GLOSS**

SHOWN ON RIGHT
3X6 FIELD IN BANGALAY GLOSS



COLOR: **BANGALAY**
FINISH: **GLOSS**



COLOR: **STERLING**
FINISH: **GLOSS**



COLOR: **CHARETTE**
FINISH: **GLOSS**



COLOR: **DEEP SEA**
FINISH: **GLOSS**



Tier 3 Colors

To further expand the 6th Avenue palette, Walker Zanger has sourced a spectrum of bespoke glaze colors in popular designer tones. Handcrafted to order, Tier 3 colors are available only by special order at a slightly higher price point than Tiers 1 and 2. They also require minimum order quantities and have a longer, yet still relatively manageable production lead time.

LEAD TIME: 10-12 WEEKS

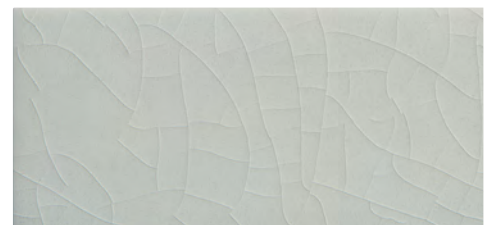
Plus transit, from date of deposit and client purchase, delivered to the Los Angeles distribution center. Please allow additional lead time for the product to reach its final destination.

MINIMUM ORDER QUANTITIES:

250 sq ft per color for field tiles / Trims & moldings can be added, so long as the field tile MOQ is met.

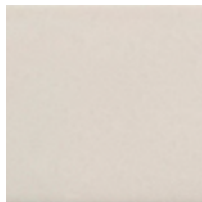
Different pieces and patterns can be mixed & matched to meet minimum order quantity as long as all are the same color.

PRODUCTS SHOWN
CURVED CHEVRON IN ICE BLUE GLOSS (RIGHT)
COCOON MOSAIC IN STEEL GLOSS (BOTTOM LEFT)
CHEVRON IN BLACK GLOSS (BOTTOM LEFT)
CURVED CHEVRON IN PEWTER GLOSS (BOTTOM MIDDLE)
3"X6" TILES IN VARIOUS TIER 3 COLORS (BOTTOM RIGHT)
CLOSE UP OF HORIZON CRACKLE TILE (BOTTOM RIGHT)





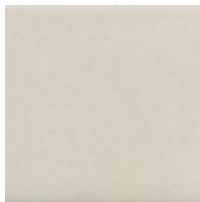
TIER 3 COLORS



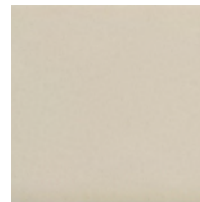
COLOR: **CANVAS**
FINISH: **MATTE**



COLOR: **BONE CHINA**
FINISH: **CRACKLE**



COLOR: **BOSTON CREAM**
FINISH: **GLOSS**



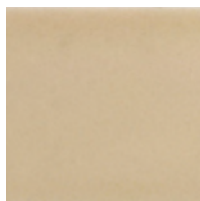
COLOR: **PASTIS**
FINISH: **GLOSS**



COLOR: **KHAKI**
FINISH: **GLOSS**



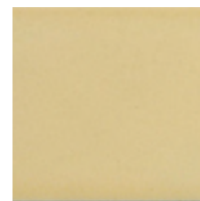
COLOR: **HAMPTONS BEIGE**
FINISH: **CRACKLE**



COLOR: **BISCUIT**
FINISH: **GLOSS**



COLOR: **LINEN**
FINISH: **GLOSS**



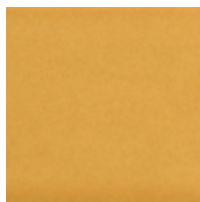
COLOR: **SUMMER DREAM**
FINISH: **GLOSS**



COLOR: **SPANISH GOLD**
FINISH: **GLOSS**



COLOR: **HONEY BEE**
FINISH: **GLOSS**



COLOR: **CARNABY**
FINISH: **GLOSS**



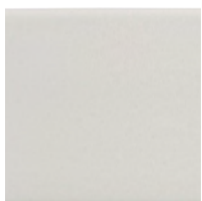
COLOR: **MIEL**
FINISH: **GLOSS**



COLOR: **LEMON GRASS**
FINISH: **GLOSS**



COLOR: **COTTONTAIL**
FINISH: **MATTE**



COLOR: **FROSTING**
FINISH: **MATTE**



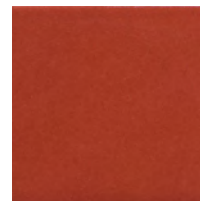
COLOR: **BALLET SLIPPER**
FINISH: **GLOSS**



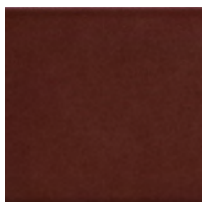
COLOR: **BLUSH**
FINISH: **GLOSS**



COLOR: **TAFFY**
FINISH: **GLOSS**



COLOR: **REEF CLAY**
FINISH: **GLOSS**



COLOR: **BORDEAUX**
FINISH: **GLOSS**



COLOR: **BRETON BEIGE**
FINISH: **CRACKLE**



COLOR: **SAND**
FINISH: **GLOSS**



COLOR: **CHAMOIS**
FINISH: **GLOSS**



COLOR: **HONEYCOMB**
FINISH: **MATTE**

TIER 3 COLORS



COLOR: **DIJON**
FINISH: **CRACKLE**



COLOR: **CHLOE**
FINISH: **GLOSS**



COLOR: **WALNUT**
FINISH: **CRACKLE**



COLOR: **GREEN TEA**
FINISH: **GLOSS**



COLOR: **BROWNSTONE**
FINISH: **CRACKLE**



COLOR: **FLAX**
FINISH: **GLOSS**



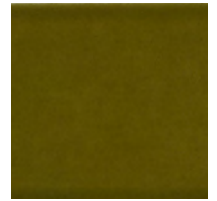
COLOR: **FLAX**
FINISH: **MATTE**



COLOR: **FEDORA**
FINISH: **GLOSS**



COLOR: **FEDORA**
FINISH: **MATTE**



COLOR: **VICTORIA STATION**
FINISH: **GLOSS**



COLOR: **GINGERBREAD**
FINISH: **GLOSS**



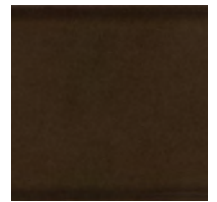
COLOR: **BARK**
FINISH: **GLOSS**



COLOR: **ESPRESSO**
FINISH: **CRACKLE**



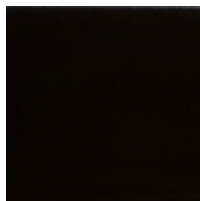
COLOR: **BENEDICT BROWN**
FINISH: **GLOSS**



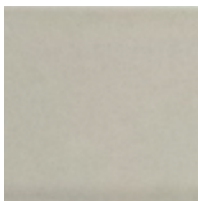
COLOR: **CHOCOLAT**
FINISH: **GLOSS**



COLOR: **BLACK**
FINISH: **GLOSS**



COLOR: **BLACK**
FINISH: **MATTE**



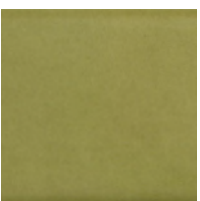
COLOR: **GREY HERON**
FINISH: **MATTE**



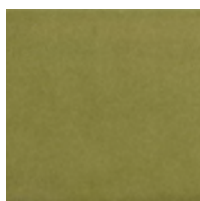
COLOR: **LOIRE**
FINISH: **CRACKLE**



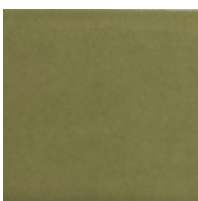
COLOR: **ALOE**
FINISH: **GLOSS**



COLOR: **KEY LIME**
FINISH: **GLOSS**



COLOR: **KEY LIME**
FINISH: **MATTE**



COLOR: **SAGE**
FINISH: **GLOSS**

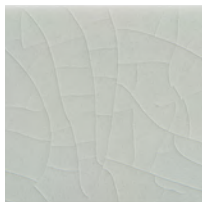


COLOR: **WOODLAND**
FINISH: **GLOSS**

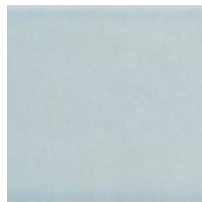


COLOR: **VELVET SAGE**
FINISH: **GLOSS**

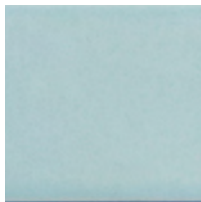
TIER 3 COLORS



COLOR: **HORIZON**
FINISH: **CRACKLE**



COLOR: **ICE BLUE**
FINISH: **GLOSS**



COLOR: **SOMETHING BLUE**
FINISH: **GLOSS**



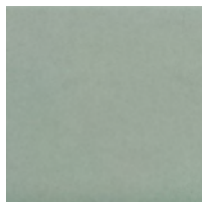
COLOR: **LICHEN**
FINISH: **GLOSS**



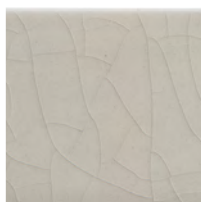
COLOR: **TIDEPOOL**
FINISH: **GLOSS**



COLOR: **AQUAMARINE**
FINISH: **GLOSS**



COLOR: **JULEP**
FINISH: **GLOSS**



COLOR: **WEDGEWOOD BLUE**
FINISH: **CRACKLE**



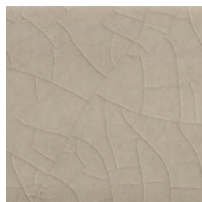
COLOR: **FOG**
FINISH: **MATTE**



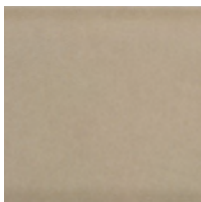
COLOR: **GOING GREY**
FINISH: **GLOSS**



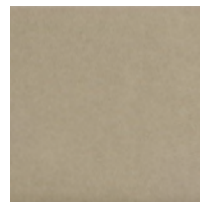
COLOR: **MANHATTAN**
FINISH: **GLOSS**



COLOR: **PIPE SMOKE**
FINISH: **CRACKLE**



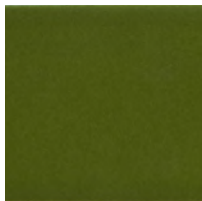
COLOR: **PEWTER**
FINISH: **GLOSS**



COLOR: **ELEPHANT**
FINISH: **MATTE**



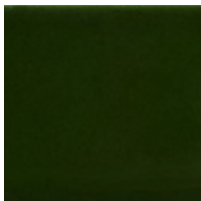
COLOR: **GRASS**
FINISH: **GLOSS**



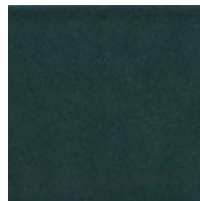
COLOR: **GRASS**
FINISH: **MATTE**



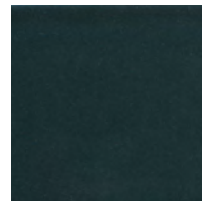
COLOR: **OLIVER GREEN**
FINISH: **GLOSS**



COLOR: **HIGHLANDS GREEN**
FINISH: **GLOSS**



COLOR: **SPRUCE**
FINISH: **GLOSS**



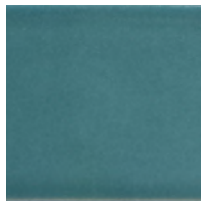
COLOR: **JUNIPER**
FINISH: **GLOSS**



COLOR: **STARRY NIGHT**
FINISH: **GLOSS**



COLOR: **MIAMI BLUE**
FINISH: **GLOSS**



COLOR: **BALMORAL**
FINISH: **GLOSS**



COLOR: **BLUE NOTE**
FINISH: **GLOSS**

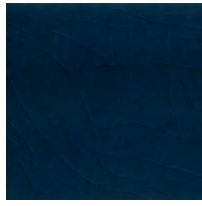


COLOR: **MARLIN BLUE**
FINISH: **MATTE**

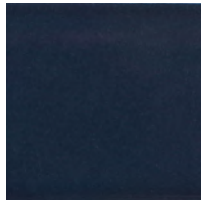
TIER 3 COLORS



COLOR: **MANGROVE**
FINISH: **GLOSS**



COLOR: **BLUE MOON**
FINISH: **GLOSS**



COLOR: **NAVY**
FINISH: **GLOSS**



COLOR: **PALE SKY**
FINISH: **MATTE**



COLOR: **STEEL**
FINISH: **GLOSS**



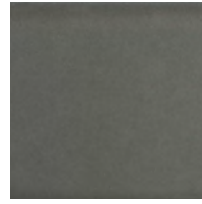
COLOR: **CAPE COD**
FINISH: **MATTE**



COLOR: **SHIITAKE**
FINISH: **GLOSS**



COLOR: **STERLING**
FINISH: **MATTE**



COLOR: **ECLIPSE**
FINISH: **GLOSS**



COLOR: **CARBON GREY**
FINISH: **GLOSS**

Mosaics



PATTERN: **CHEVRON**
SIZE: 10-3/8" X 10"



PATTERN: **CURVED CHEVRON**
SIZE: 7-11/16" X 8-7/8"



PATTERN: **2" HEX MOSAIC**
SIZE: 10-1/2" X 11"



PATTERN: **MUSEUM MOSAIC**
SIZE: 10-1/2" X 11-1/4"



PATTERN: **COCOON MOSAIC**
SIZE: 10-1/8" X 10"



PATTERN: **PENNY ROUND MOSAIC**
SIZE: 12" X 12"



PATTERN: **1" X 6" MOSAIC**
SIZE: 9-7/8" X 12"



PATTERN: **JULIA MOSAIC**
SIZE: 7-3/4" X 12-3/4"

Field Tiles



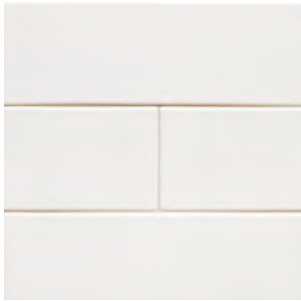
PATTERN: 6" X 6" FIELD TILE
SIZE: 6" X 6"



PATTERN: 2" X 6" FIELD TILE
SIZE: 2" X 6"



PATTERN: 3" X 6" FIELD TILE
SIZE: 3" X 6"



PATTERN: 4" X 12" FIELD TILE
SIZE: 4" X 12"



PATTERN: 6" HEXAGON
SIZE: 6" X 6"



PATTERN: LONG HEXAGON
SIZE: 2" X 6"

Trim



PATTERN: BASE MOLDING
SIZE: 4" X 8-1/2"



PATTERN: RAIL MOLDING
SIZE: 2-1/4" X 8-1/2"



PATTERN: RIDGE LINER
SIZE: 5/8" X 8-1/2"



PATTERN: STICK LINER
SIZE: 3/8" X 8-1/2"



PATTERN: DEMI BULLNOSE
SIZE: 1/2" X 8"

Matte Glazes

USAGES



Residential Interior Floor



Residential Interior Wall



Shower Wall



Shower Floor



COMMERCIAL USE
Interior Walls only

MATERIAL DATA & MAINTENENCE



ABSORPTION
Non-absorbent



CARE
Clean with a damp cloth and
gentle, non-acidic soap



CHEMICALS
May experience etching if exposed
to acidic liquid



Stain Resistant



SEALING
Sealing is not required

MEDIUM



V3 COLOR VARIATION

*Handmade tiles consist of a higher variation

Crackle Glazes

USAGES



Residential Interior Wall



COMMERCIAL USE
Interior Walls only

MATERIAL DATA & MAINTENENCE



ABSORPTION
Crackle can absorb moisture,
should not be used in any wet areas



CARE
Clean with a damp cloth and
gentle, non-acidic soap



SPRAY SEALING
Tile should be sealed prior to and
after grouting



GROUTING
Dark grout colors should not be used
with light colored crackle tiles, it can
permanently stain the crackle

MEDIUM



V3 COLOR VARIATION

*Handmade tiles consist of a higher variation

Gloss Glazes

MATERIAL DATA & MAINTENANCE



Residential Interior Floor



Residential Interior Wall



Shower Wall



Shower Floor



COMMERCIAL USE
Interior Walls only



ABSORPTION
Non-absorbent



CARE
Clean with a damp cloth and
gentle, non-acidic soap



CHEMICALS
May experience etching if exposed
to acidic liquid



Stain Resistant



SEALING
Sealing is not required

MEDIUM



V3 COLOR VARIATION

*Handmade tiles consist of a higher variation

ADDITIONAL NOTES

Crackle glazes are not suitable for any wet area applications or any floor applications. Crackle glazes should be sealed prior to and after grouting. Installation on exterior wall is only recommended for non-freeze/thaw climates. For glazes that apply to installation on shower floors, please refer to TCNA guidelines and consult with your installer for proper waterproofing and sealing requirements. For any further questions/information about additional usages, please consult with your installer.

6TH AVENUE IS SPECIALLY MADE IN A SMALL BATCH FORMAT

Samples can vary from actual production. Differences in color, shape, size, moisture absorption, surface finish, texture, and coefficient of friction, are the unique characteristics that distinguish each of these tile products and should be considered in each customer's purchase decision and decision regarding the intended use of the product selected.

Variations of these characteristics can occur between production lots of the same product type and are inherent characteristics resulting from the manufacturing process. All sizes are nominal only and may vary. Finish trim pieces require a different manufacturing process than the field tile and as a result, may vary slightly in color. Glazing on extreme relief (textured) ceramic tiles will vary in thickness. As a result, the glazing may appear darker and lighter in different areas throughout the tile.

Glazed ceramic products are subject to crazing. Crazing is the cracking solely within the fired glaze due to tensile stresses, temperature fluctuation, or expansion and contraction of the tile body or setting bed. Crazing is not a defect, nor does it affect the durability of the products and is an inherent characteristic of the manufacturing process. Some tiles are intentionally induced to craze to produce what is known as a crackle finish. Crackle glaze tiles should be sealed with a penetrating sealer prior to grouting to keep the grout from staining the clay body. Crackle glaze tiles should not be used on kitchen counter surfaces or surfaces subject to heavy uses. In areas that experience regular moisture, such as in showers, regular resealing of crackle glazes is a necessary practice.

VAPOR & MOISTURE BARRIER DISCLAIMER

When stone products or ceramic, porcelain, glass, or metal tile is installed on a concrete slab at ground level, it is the responsibility of the customer and the customer's installer to ensure that the slab is dry and fully cured and that a proper vapor moisture barrier is in place between the concrete slab and the stone product, ceramic, glass or metal tile prior to installation. All shower floor substrates and twelve inches up the adjacent perimeter walls must have a waterproof membrane on the top surface of the fully cured mortar bed prior to tiling.

ELECTRONIC NOTICE, DELAYS, INSPECTION REQUIREMENT

Buyer agrees to receive all notices, invoices, and other communications by electronic means, at the email address that has been provided by Buyer. Walker Zanger is not responsible for delivery delays beyond its control. It is the responsibility of the customer, the customer's representatives, general contractor, subcontractors, installer, and any person responsible to the owner regarding the installation of the product or the finished product, to *inspect* each Walker Zanger product upon delivery to the job site. All merchandise should be checked in and *inspected* immediately upon delivery, using the Walker Zanger packing list sent with the merchandise, to ensure the delivery of all listed items and the absence of damage. All claims of damage must be reported by facsimile transmission within 48 hours of delivery to the delivery carrier and to Walker Zanger. **Do not return merchandise without strictly complying with the return merchandise policy set forth below.** Time is of the essence in regard to these inspection and reporting requirements.

RETURN MERCHANDISE POLICY

This is a special order product, **absolutely no returns** will be accepted.

CONDITIONS OF SALE

Walker & Zanger, Inc. ("Walker Zanger") provides information concerning its products, installation procedures, and maintenance practices to assist its clients in making selection, usage, installation, and maintenance decisions, to maximize their enjoyment of its products. It is the responsibility of the client and/or the client's installer to blend the product to the owner/client's satisfaction. Client's selection and usage of Walker Zanger's products and the installation procedure and maintenance practice employed by each client are outside the direction and control of Walker Zanger and are strictly the choice and responsibility of each client.

DISCLAIMER OF WARRANTIES

Walker Zanger does not warranty any product for any specific use or any installation procedure or maintenance practice. Upon installing or using any product, buyer waives all claims relating to the product, including all express warranties and/or implied warranties, including implied warranties of merchantability. Seller disclaims all such claims. Walker Zanger shall not be liable for any special or consequential damages arising from the ownership, use, possession, or maintenance of any product by any person.

PRICES

Walker Zanger reserves the right to change its prices, terms and conditions of sale without notice. All prices are F.O.B. Walker Zanger's warehouse unless otherwise quoted.

TERMS

Sales are made on a cash basis only, unless prior "Open Account" status has been arranged with our credit department. When credit is granted, terms are 10 days net. Interest at 1-1/2% per month (18% per annum) or the maximum rate allowable by law, whichever is less, as well as court costs and collection and attorney's fees, will be charged on all past due invoices. C.O.D. on accounts over 60 days. All shipments are FOB Origin.

LIMITATIONS OF ACTIONS

The parties whom agree an action for breach of contract must be commenced within one year after accrual.



AFFORDABLE LUXURY

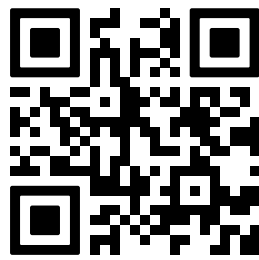
| Beautifully handcrafted tile in a dazzling spectrum of colors.

WHITE-BODY CERAMIC

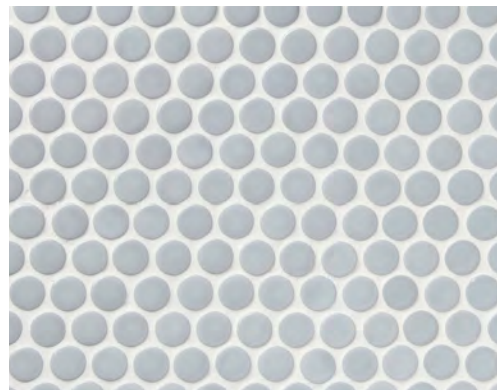
| Durable enough to be rated for use in residential flooring.

DESIGNED FOR DESIGNERS

| A vast and versatile palette with relatively brief and manageable lead times.



SCAN TO EXPLORE THE 6TH AVENUE COLLECTION



WALKER ZANGER™

CALIFORNIA | GEORGIA | NEVADA | NEW YORK | NORTH CAROLINA | TEXAS

WALKERZANGER.COM